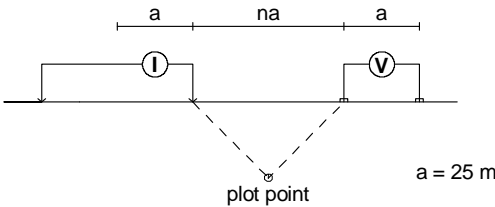
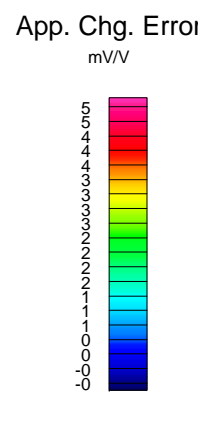
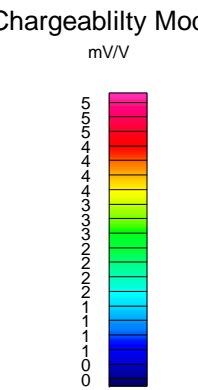
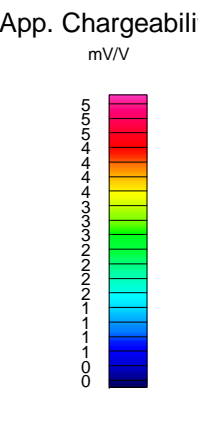
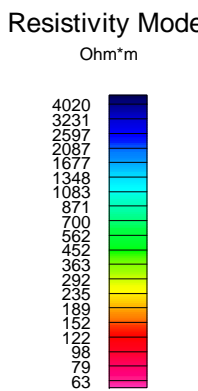
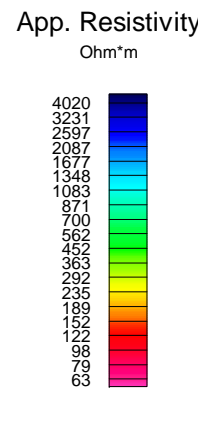
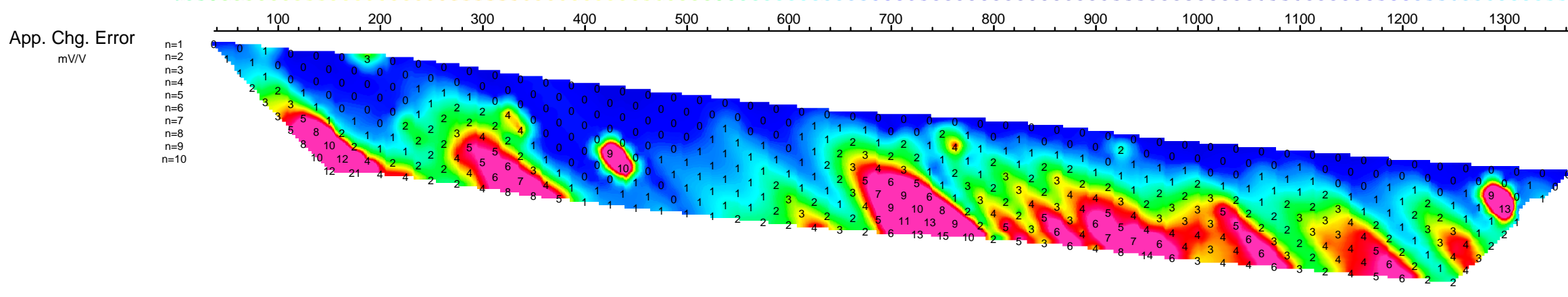
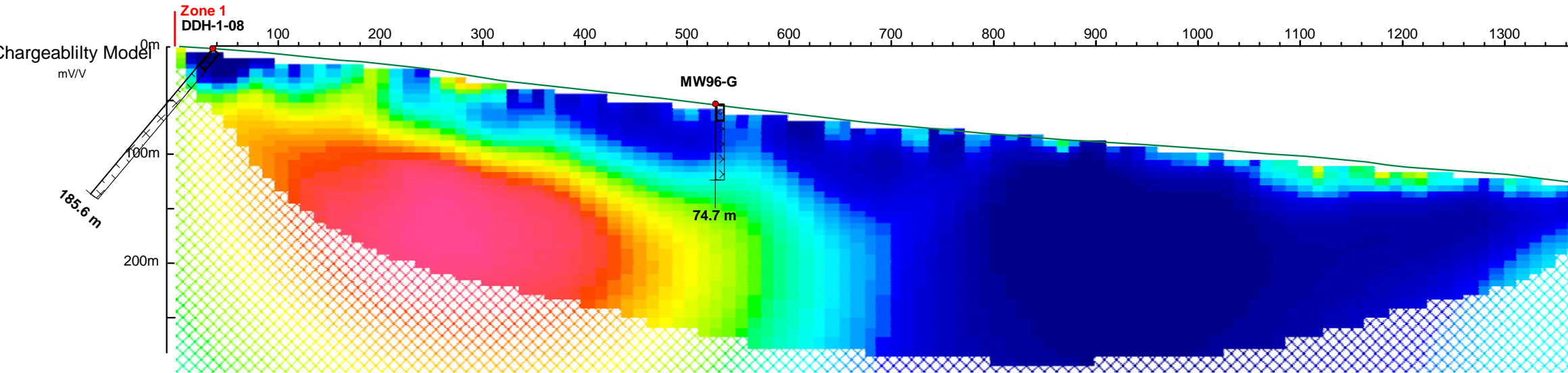
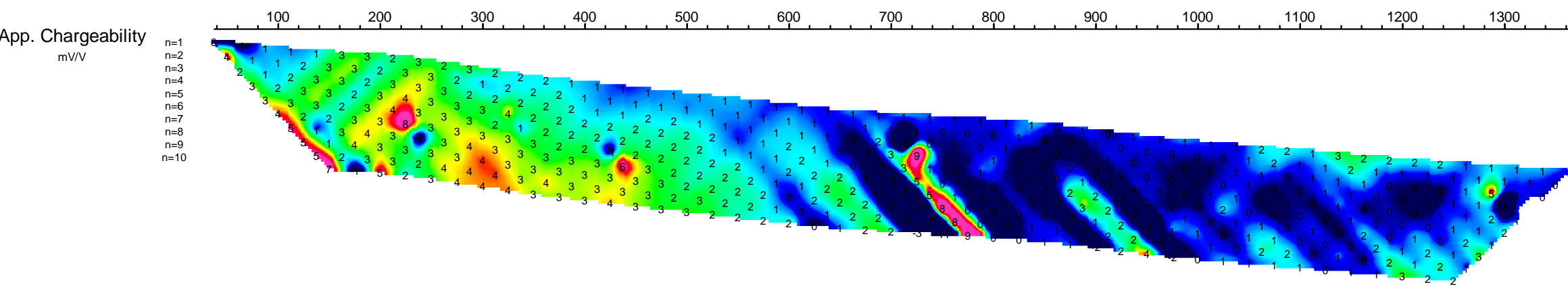
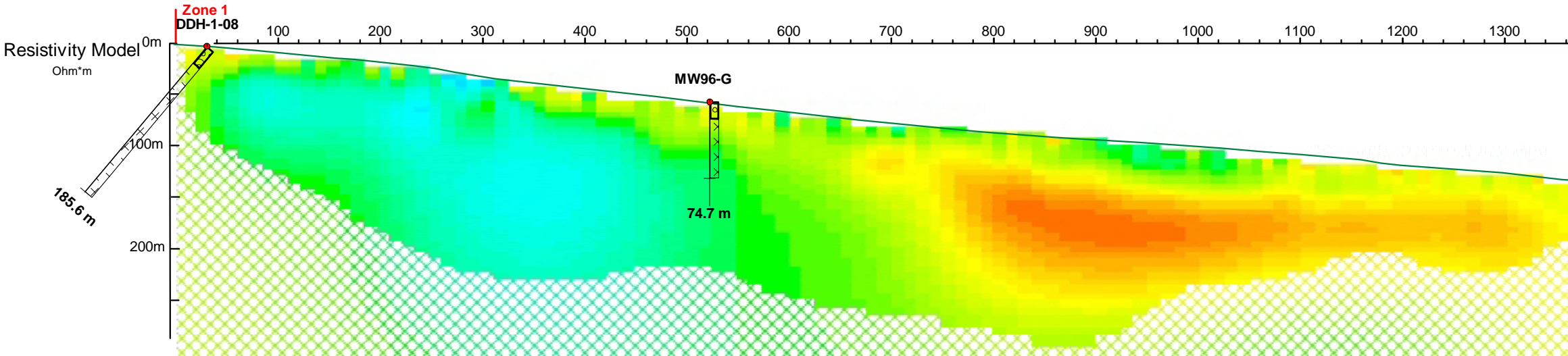
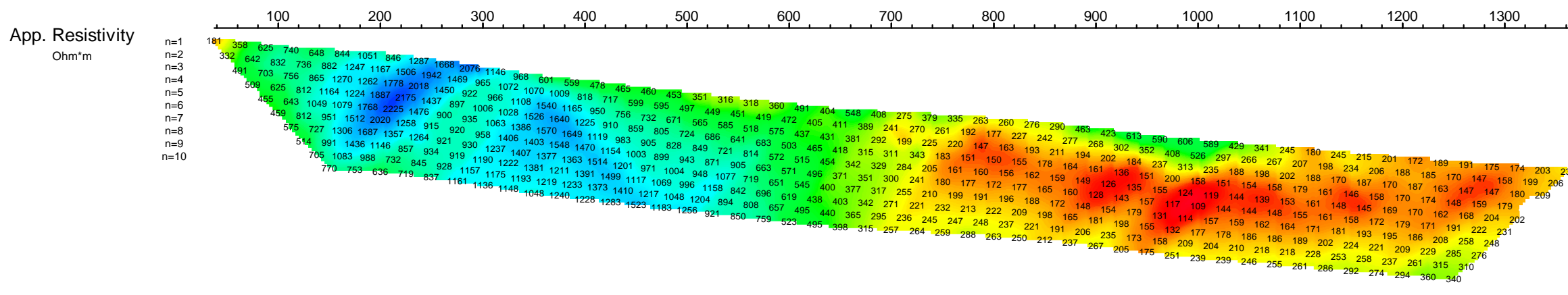
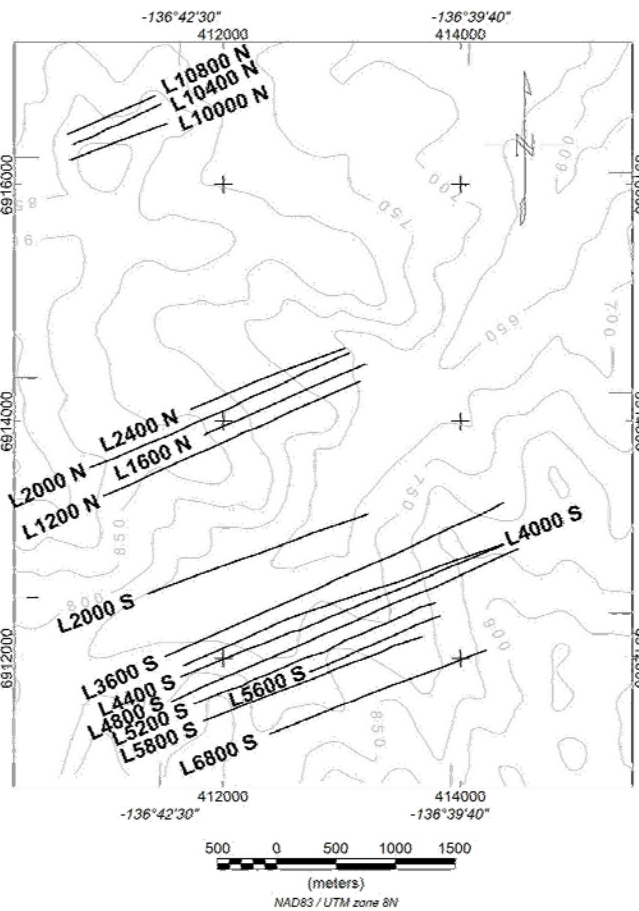


COMPOSITE SECTION PLOT
L2400N

Modified Pole-Dipole Array



Stationary electrode at 0E (moving E).
Receiver: Iris ElrecPro
Transmitter: GDD Tx-II 3.6kW
Data File: Line 2400-25m-final.xyz
Dates Surveyed : Sept 29, 2007



Scale 1:5000
50 0 50 100 150 200 250 300
metres

No Vertical Exaggeration

WESTERN COPPER CORPORATION

INDUCED POLARIZATION SURVEY
CARMACKS COPPER PROJECT
COMPOSITE SECTION L2400N - 25m DIPOLES

Mining District: Whitehorse
NTS: 115 I/07
Job: WRN-7506-YT

Datum: Local Grid
Drawn by: GH
Date: 18 Dec 07

AURORA GEOSCIENCES LTD.